



MECASYS CO., LTD.
 Head Office
 7F, 550-3, Noeun-dong, Yuseong-gu, Daejeon, 305-325, Republic of KOREA
 TEL +82-42-485-0118 FAX +82-42-485-7118

Overseas Sales Section
 8F DaedukValleyVenture, 169-8, Samsung1-dong, Kangnam-gu, Seoul, 135-882, Republic of KOREA
 TEL +82-10-5123-8118, +82-10-5124-8118 FAX +82-42-485-7118

<http://www.mecasys.co.kr> E-mail overseas@mecasys.co.kr



▶ Water quality analysis reagent

No.	Parameter	No.	Parameter	No.	Parameter
1	Aluminium	9	Chromate	17	Phosphate
2	Arsenic	10	Cobalt	18	Sulfide
3	Boron	11	COD	19	Silicon
4	Bromine	12	Cyanide	20	Silver
5	Chlorine dioxide(ClO ₂)	13	Fluoride	21	Total Nitrogen
6	Chlorine Free	14	Manganese	22	Total Phosphate
7	Chlorine Total	15	Nitrite(NO ₂)	23	Zinc
8	Calcium	16	Phenol		

▶ Certificates



- Established MECASYS R&D center in 2001
- Appointed as a research center for measuring instrumentation (by Korea Standard Science Center)
- selected as a INNO-Blz company (by Medium & Small enterprises administration)
- licensed Medical Device Manufacturing company (by Korea Food & Drug Administration)
- Selected as Export prospecting Company (by Medium & Small enterprises administration)
- Patent - Rapid analysis method for residual Pesticides, and so on



ISO 9001 CERTIFICATE NO. JK-12048
 ISO 14001 CERTIFICATE NO. JK-2436

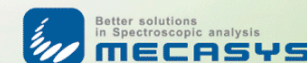


WATER QUALITY ANALYZERS

Optizen 3220UV QX

Optizen 2120UV QX

Optizen 1412V QX



OPTIZEN QX series are

designed for water quality analysis to improving and simplifying analytical procedures for routine use.



Compact modules, reagent kits, and software facilitate system operation.

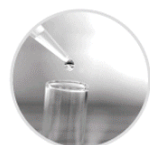
Usage in:

to surface water (rivers, lakes, reservoirs, seas and oceans), ground water, domestic sewage and industrial waste water discharged from urban sewage treatment plant, chemical plant, gas plant, coke oven plant, paper factory, pharmaceutical factory, iron and steel plant, detergent factory, tannery, landfill percolate, dyeing plant, chemical fiber plant, agricultural products processing factory, beverage factory, milk plant, brewery, food factory, etc.

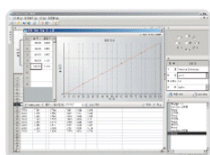
Features

- High sample throughput
- High quality reagents use: in cooperation with MERCK, one of the leading water quality test kit producer in the world
- Cost down maintenance
- High resolution: high precision sine driver monochromator provides selection of 1 nm wavelength between 190~ 1100nm.

Simple and Easy Analysis Method



Sample preparation and Reagent mixing



Concentration calculation with OPTIZEN QX series



Keep the mixture in a reactor for pre-set time when needed

Optizen 3220UV QX

- Windows XP based OS provides you with more stable and user-friendly environment. Anyone can easily use Optizen 3220UV QX like PC.
- Meet the Zero-Defects Data with more powerful AGC(Auto Gain Control) circuit and SLC(Sliding LC Mirror Changer) system
- USB ports for user-friendly programming updates and other accessory connections
- Easy to use software with scanning and time course scanning



Double-Beam UV/Vis Spectrophotometer

Wavelength Range	190nm ~ 1100nm
Spectral Bandwidth	< 1.0nm
Overall Dimensions	600(W)X400(D)X250(H)

Optizen 2120UV QX

- **ABM(Auto Blank Measurement)**
To minimize variations of reference samples' value due to time lapse between measurements, Optizen 2120UV QX measures the zero value every time you measure samples.
- **High Throughput System**
With 8 Cells Rotary type cell-holder, you can measure several samples at once.



Single-Beam UV/Vis Spectrophotometer

Wavelength Range	190nm ~ 1100nm
Spectral Bandwidth	< 1.0nm
Overall Dimensions	515(W)X430(D)X242(H)

Optizen 1412V QX

- **Direct Display of Absorbance and Concentration.**
Easy-To-See ABS/%T/CONC. and Standard Curve are built-in programs that make Optizen 1412V QX more useful. Moreover, you can use wavelength scanning and time course scanning with OptizenView(pc windows software) by connecting RS-232C serial cable with your own PC.



Visible Spectrophotometer

Wavelength Range	340nm ~ 1100nm
Spectral Bandwidth	< 3.0nm
Overall Dimensions	385(W)X344(D)X180(H)